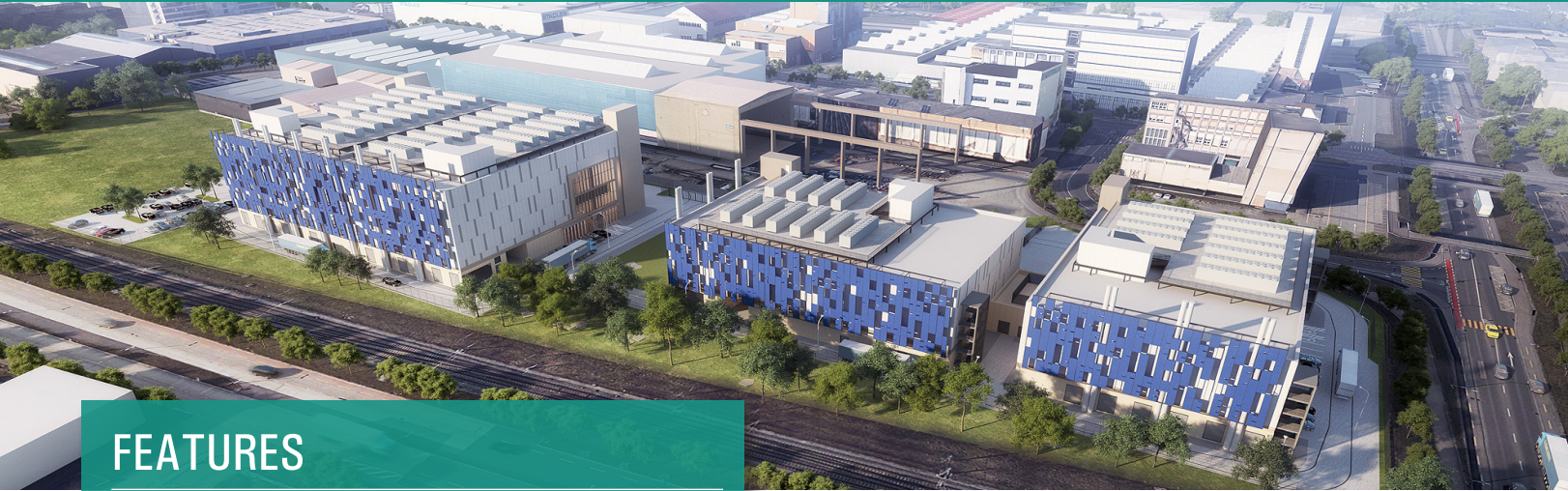


ZURICH DATA CENTER CAMPUS OVERVIEW

Bringing Data Center Excellence to Switzerland



FEATURES

- 7-acre (3 hectares) campus
- 40MW of critical IT load
- Four planned, multi-story data centers
- 130,000 SF (12,000 M²) of leasable data center space
- 300W/SF (3.2kW/M²) average density
- Numerous green initiatives to maximize sustainability such as advanced heat recovery and solar facades
- Class A building amenities including office, conference rooms, break rooms and more

SPECIFICATIONS

POWER 40MW of IT capacity

POWER DENSITY Up to 300W/SF

DATA CENTER AREA 130,000 SF

AMENITIES

- Dedicated offices and workspaces customizable to your needs
- Multiple conference rooms and meeting spaces throughout the campus
- Secure storage with easy access between data modules
- EV charging stations for cars and bikes
- Located just a short drive from the Zurich Airport

POWER

- Power provided by Stadtwerk Winterthur
- Multiple, diverse power feeds supporting the campus
- 400V electrical configuration
- All systems 100% concurrently maintainable

COOLING

- N+1 overall, N+2 component-level redundancy across mechanical systems
- Computer Room Air Handling (CRAH) units located in two galleries on opposite sides of each data module allow for highly efficient airflow distribution
- Closed-loop chilled water system with air-side economizers
- Water Utilization Efficiency (WUE) is near zero (liters/kW/hr) using the latest cooling design

CONNECTIVITY

- Two meet-me-rooms (MMRs) for each of the four data centers comprising the campus, allowing for diverse paths and multiple connectivity options
- Three points-of-entry (POEs) for the campus, ensuring maximum path diversity for inbound carriers
- Diverse fiber routes to other major data centers in the Zurich area

SECURITY

- On-site security operations center with patrols 24x7x365
- K12-rated fencing around the perimeter
- CCTV on all access control points throughout the entire campus
- Dual authentication for customer and critical infrastructure areas
- Visitor Management System with controlled and monitored access points and stringent access control policy